

Light Tape® Color Options

Our base colors are the Classic Natural Blue and Extreme Blue-Green. These colors appear white when off and lightly colored when illuminated. We then add filters to produce alternative color options.

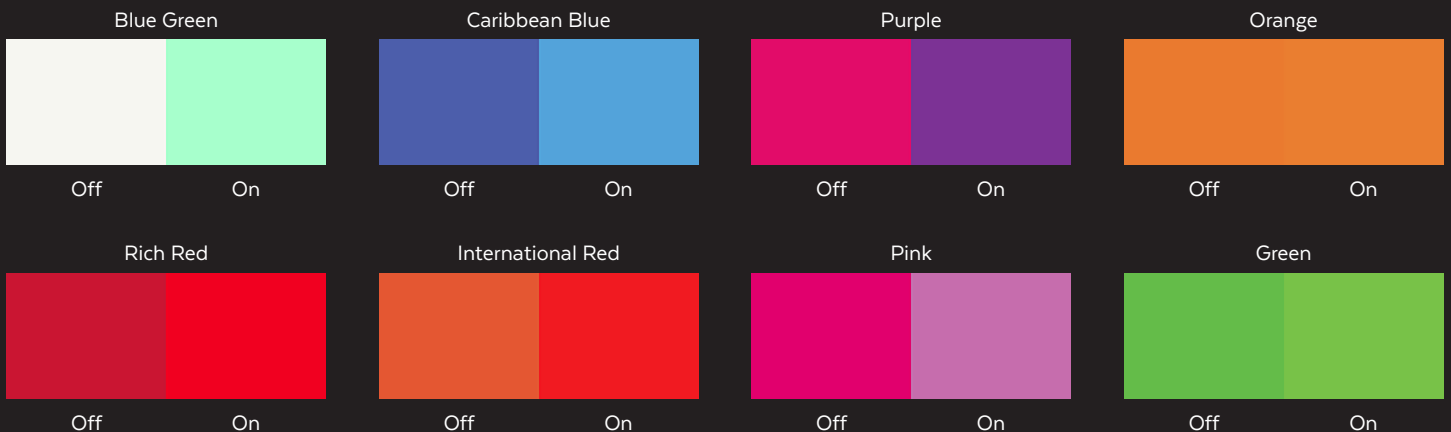
Our Media White and Glacier White colors are perfect for backlighting and applications requiring white, unfiltered light, these will appear lightly colored when switched off.

Our remaining range of colors will retain their vibrance when not illuminated so you don't lose the desired effect even when it's switched off, perfect for branding and advertising.

CLASSIC SERIES



EXTREME SERIES



NOTE: The colors in this guide are simulated and as such the final product may vary. If an exact color is required, we recommend seeing a physical sample of the lamp. Custom colors and widths are available, but may be subject to minimum order quantities, set-up fees, and approval testing.