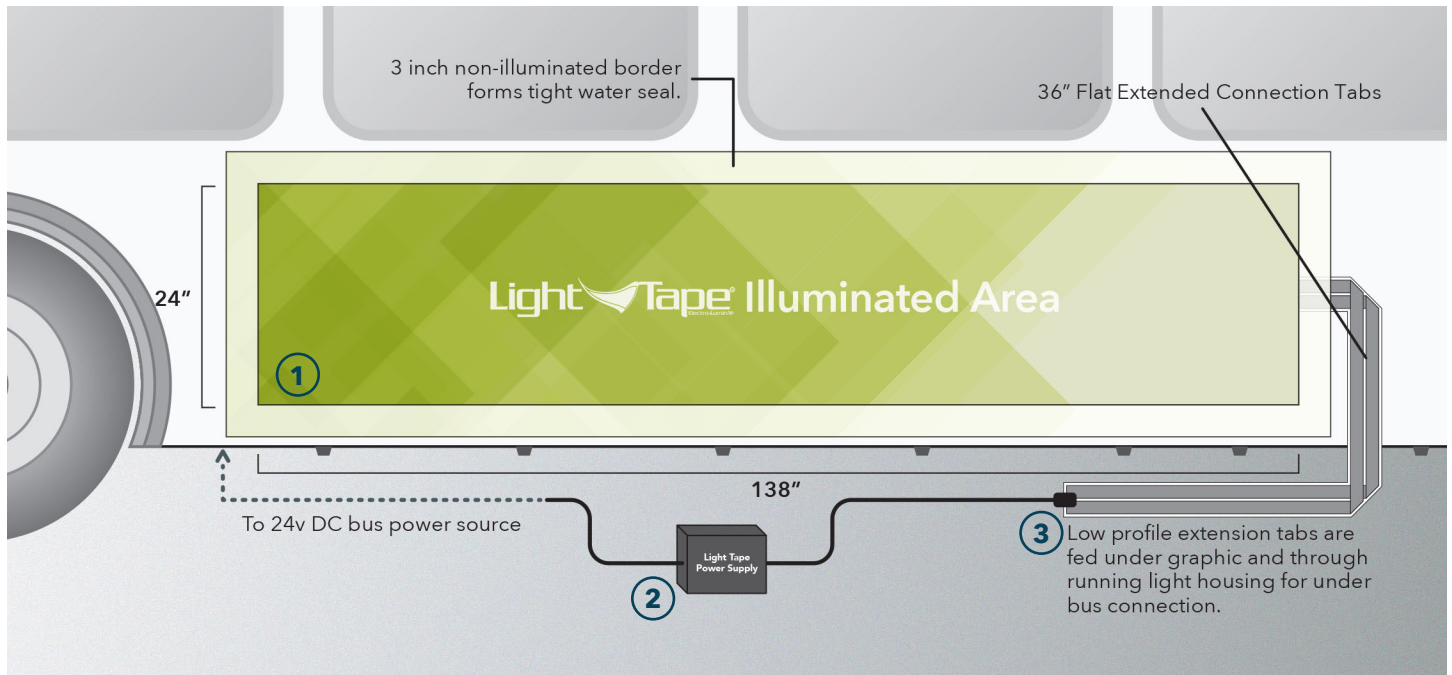
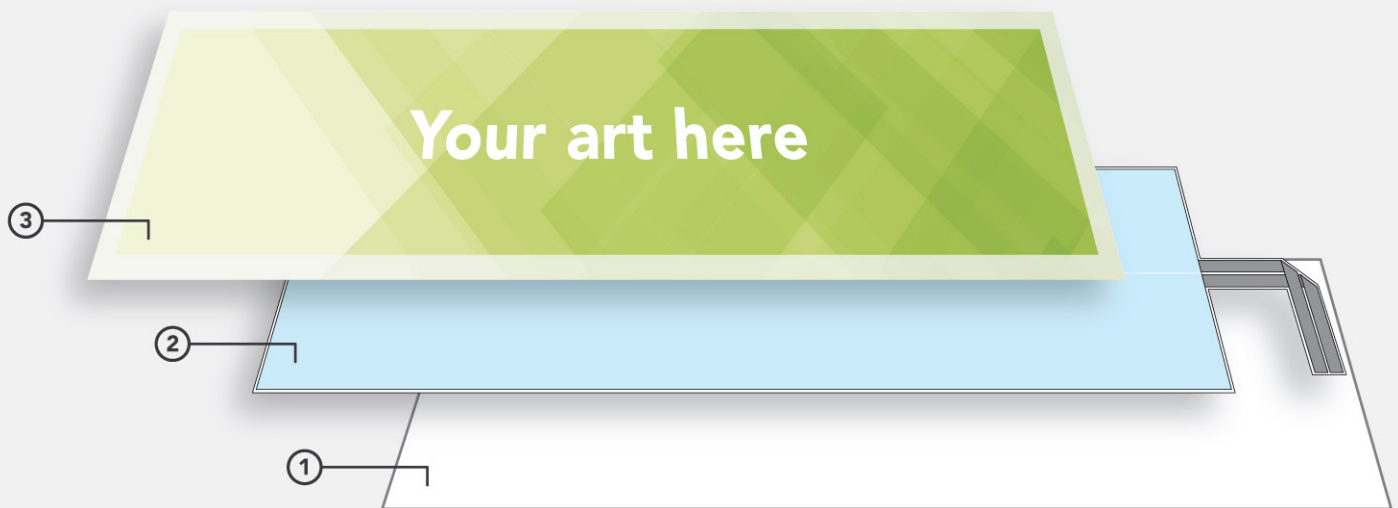


Light Tape® Backlit Transit Advertising Program FOR KING-SIZE BUS POSTERS



1 LIGHT TAPE KING-SIZE SYSTEM EXPLODED-VIEW



1. Utilize existing advertisement as mounting base to protect bus surface.
2. Attach 24 x 138" Light Tape® Backlight via double sided outdoor tape to side of bus.
*3M VHB
3. Cover with translucent vinyl* leaving 3" border around illuminated area.
*FLEXcon LITEcal®

2 BUS-DSD-4000 DC SMART DRIVER

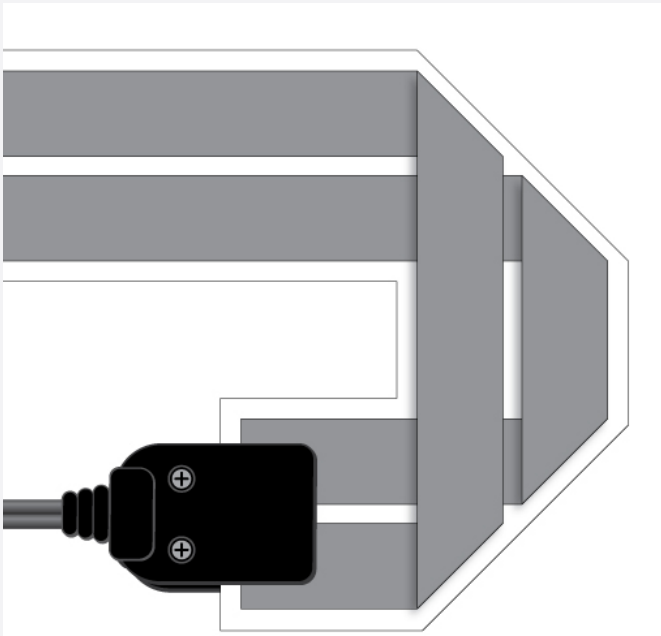


Load:	3,312 in ²		
Input:	4.30 AMP	Output:	1.55AMP
	24Vdc		270Vac
Dimensions:	8.75" x 6.25" x 3"		
Weight:	5.15 lb		

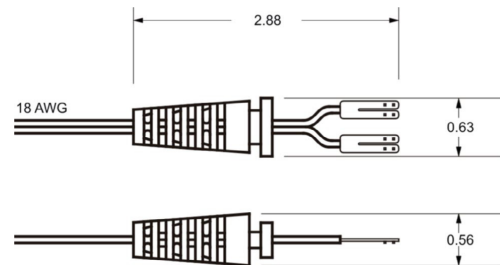
Key Features

- The Solid State Smart Driver™ can integrate into bus lighting system.
- Normally located inside behind driver seat
- UL Approved Technology
- Short circuit and overload protection

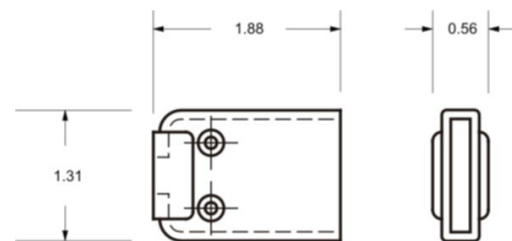
3 STANDARD CONNECTOR



Extension tabs allow for connection to be hidden inside the bus carriage.



18 AWG 6 foot lead with strain relief



Exterior IP67 rated exterior connections ensure protection from the harshest of environments.

Technical Specifications

Light Tape® Physical Specifications	
Thickness (varies depending on color)	0.010 to 0.020 inches / 0.254 to 0.305 millimeters
Protective Encapsulation Seal	¼" (3.35mm) on each side (+/- 1/16 inch, +/-0.159 cm)
Light Tape® Illumination Width	0.25" to 33" / 0.625 to 90 cm
Illumination Coverage	Infinite, can be tiled without a break in light
Power System	
Light Tape® Load	Capacitive Load
Phase Angle	78° Leading Edge
Light Tape® Average Power Consumption by Area	0.023 watts per in ² / 0.0035 watts per cm ²
Light Tape® Amperage Consumption by Area**	0.19 milliamps per in ² / .0296 milliamps per cm ²
Light Tape® Watts per Linear Meter at 2.54 cm wide	0.4 to 1.1 watts based on low to full brightness dimming
Light Tape® Watts per Square Meter	16 to 50 watts based on low to full brightness dimming
Light Tape® Output Voltage (dimmable)	250 Volts AC, +/- 50 Volts AC
Light Tape® Operating Frequency	800 Hertz, +/- 300 Hertz (depending on tuning)
AC Driver Input Voltage Range	90 to 260 Volts AC
DC Driver Input Voltage Range	3 to 24 volts DC (12 Volts DC standard)
Power Source	ELLC Smart Driver™ Power Supplies
Controllable	Dimming, 0 to 10 Volts DC and DMX 512 Capable
Light Tape® Performance	
Useful Life - Hours	20,000 hours to excess of 40,000 hours
Useful Life - Years	up to 20 years (dependent on drive parameters)
Average Brightness	125 cd/m ²
Brightness Range	0 to 200 cd/m ²
Brightness Differential - Completely Uniform	+/- 1 cd/m ² , independent of total surface area
Operating Temperature - Ambient	-40°C to +65°C
Heat Gain During Operation	Does not produce heat during operation
Compressive Strength - Ground Pressure	500 psi or more depending on mounting system
Impact Strength - Izod (73F)	6.5 ft-lbs/in ²
Flexural Strength	700>15,000 cycles ASTM D2176
Flexibility - Wrap Angle	Contours around 6 millimeter diameter object
Punctureable	Yes, will illuminate after puncturing
Maximum Processing Temperature	350°F / 177°C (depending on residence time)
Health and Safety	
Safety Features	Overload and short circuit protection. UL listed.
UL Certifications	File number E319670, 2006/95/EC
CE Certifications	EC-Attestation of conformity - No. 0704 63147 001
Low Voltage Directive	Compliant
Environmental Compliance	ROHS and WEEE Directive
EMC Emissions Compliant	EN55015 (CISPR15) Radiated and Conducted Emission
Flame Resistance	UL 94VTM-0
International Protection Marking	IP67, EN60529
**Data recorded at average brightness, with AC input power of 250 Volts and 850 Hertz.	